

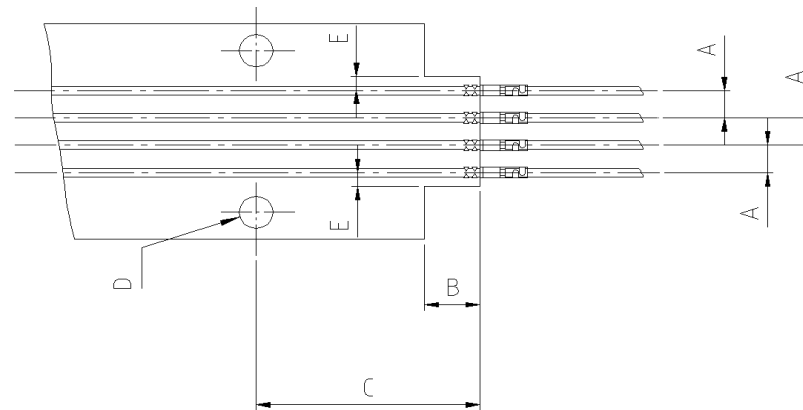
Inquiry form for FFC-equipment

To handle your request, please fill in all fields and provide samples!

Inquirer	
Date	
Customer	
Project name	

Contact	Contact name	
	FFC-contact Tyco Electronics-PN	
	Number of contacts	
Foil	Foil type (ink, copper, laminated, extruded etc.)	
	Foil layout	please provide drawings
	Foil thickness [μm]	
	Side (Margin) distance (min. 1 x pitch) [mm]	
	Pitch [mm]	
	Conductor thickness [μm]	
	Foil samples	please provide samples
	Cable (only for wire-splice)	Cable type (sheathed cable, single wire)
Stripping length of cable sheath [mm]		
Sheath diameter [mm]		
Number of wires		
Conductor type (stranded wire, solid wire)		
Insulation diameter [mm]		
Wire size [mm^2]		
Cable sample	please provide samples	
Other	Quantity [assemblies per year]	
	Required equipment (manual, semi-automatic, fully automatic)	

Specific requirements for the processing of wire splice contacts TE PN 965927 and 968616



A = Pitch

B = Min. 10 mm resp. 35 mm depending on the tool type (only for shaped foil)

C = Min. 40 mm (only for shaped foil)

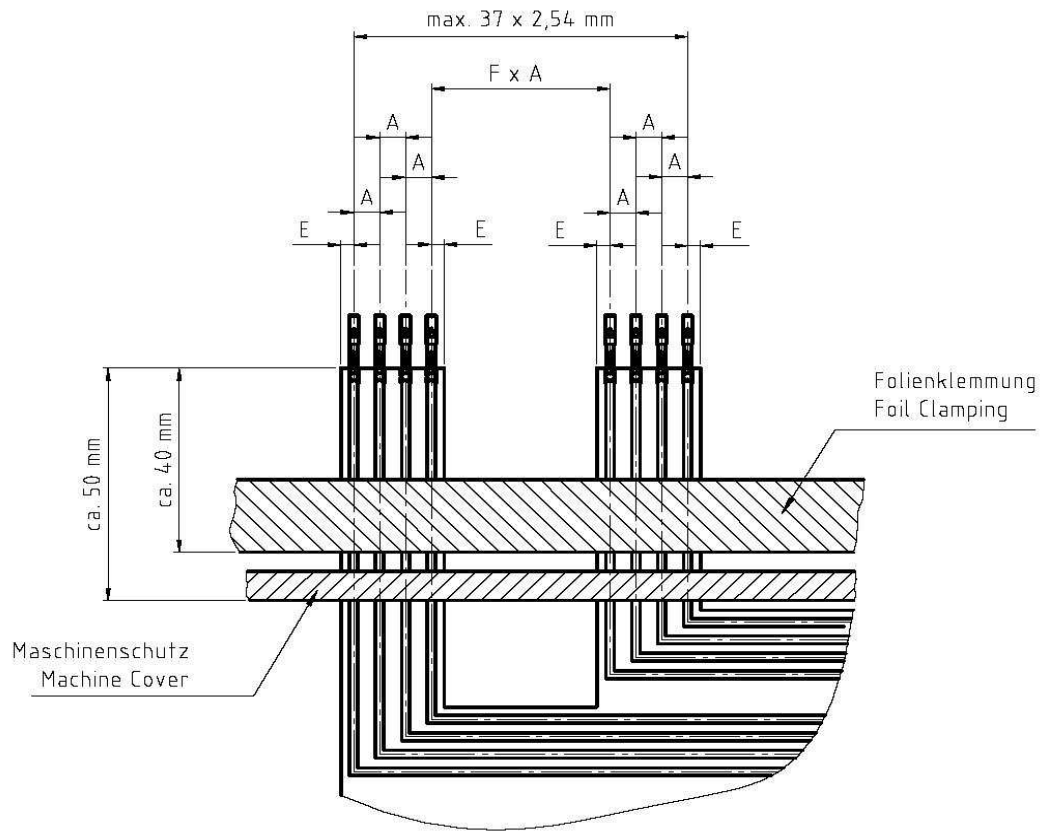
D = Index hole with \varnothing 2-4 mm (only for shaped foil)

E = Side (Margin) distance = min. 1 x A

Please notice:

For wire-splice contacts the smallest pitch is 5.08 mm (because of the wire crimp).
The stripping length of the wires has to correspond to the Tyco Electronics-specification.

Specifically requirements for the processing with the FFC Crimpmachine TE PN 528000-7



A = Pitch
 F = Integer value
 E = Side (Margin) distance = min. 1 x A

For folis with a smaller pitch than 4 x 2,54 mm there is a special foil stop needed!