

Semi-Automatic Pressfit Equipment

BMEP-3T / 5T Bench Top Electric Servo Press (3 or 5 Ton)

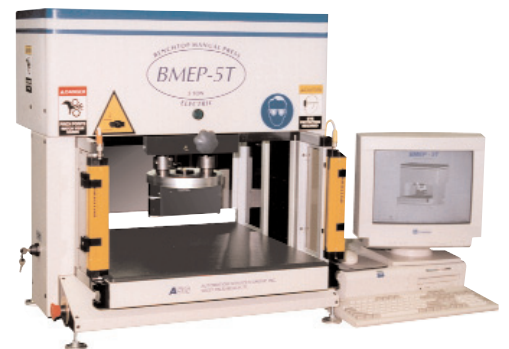
- 27 or 44 kN force (3 or 5 tons)
- 18" x 24" PCB capacity [460 x 610]
- Compact footprint 24" x 48" [610 x 120]
- Computed controlled
- automatic setup — no adjustments
- Speed, height & force control
- SPC on pressing force

This Bench Top Servo Press, designed with a rigid "H" frame to minimize deflection, is available in two models (BMEP-3T or 5 Ton). It is considered a manual machine due to the manual alignment of the press head and PCB. The machine head can also be rotated up to 90° for optimal positioning.

The BMEP can press any connector within this range using the moveable head. An SPC feature within the BMEP's software (included) provides a log and allows press force plotting for every connector.

Product setup is easy, with no hardware adjustments required. Use of tool and connector databases, in conjunction with a press sequence program provides a fully data driven press cycle.

Options include a Bar Code Scanner which provides fast PCB serial number entry, an Air Table Option which assists the operator when placing product under the press head, and a Touch Screen Monitor for easy operator interfacing.



MEP-6T / 12T Manual Electric Servo Press (6 or 12 Ton)

- 53 or 107 kN force (6 or 12 tons)
- 24" x 36" [610 x 914] PCB capacity
- Small, portable design
- Computer controlled
- Automatic setup — no adjustments
- Speed, height & force control
- SPC on pressing force

This manual Electric Servo Press, designed with a rigid "H" frame to minimize deflection, is available in two models (6 ton and 12 ton). The operator can manually adjust the press head and/or the PCB between connector press cycles.

An air bearing system provides effortless press head positioning. The SPC feature within the MEP's software (included) provides a press log and allows press force plotting for every connector.

Product setup is accomplished without any hardware adjustments required. Use of tool and connector databases, and a press sequence program, provides a fully data driven press cycle.

Options include a Bar Code Scanner, which provides fast PCB serial number entry, an Air Table Option that assists the operator when positioning product under the press head, and a Touch Screen Monitor for enhanced machine operation.



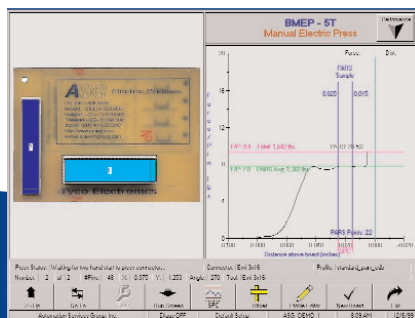
Semi-Automatic Pressfit Equipment

	Description	Part Number
Base Machine	BMEP-3T Press	1-1399400-5
	BMEP-5T Press	2-1399401-4
	MEP-6T Press	2-1399500-5
	MEP-12T Press	1-1399501-7
Option Packages	1. Bar Code Scanner	1395092-1
	2. Air Table w/Foot Switch (BMEP & MEP)	1395093-1
	3. Active Laser (MEP)	1398740-1
	4. Tool-in-Place Sensor	1399028-1
Extra Accessories	1a. HP Color Printer	1395792-1
	1b. Printer Cable (parallel)	1398111-1
	1c. Printer Stand (MEP)	1397635-1
	2a. Digital Camera	1398120-1
	2b. Digital Camera AC Adapter	1397831-1
	3a. Touch Screen SVGA Monitor	1395311-1
	3b. Non-Touch Screen SVGA Monitor (BMEP & MEP)	1395307-2 (NC)
	4. ACAL Unit (Automatic Calibration Unit)	1395091-1 *
	5. Spare Parts Kit (MEP)	1398938-2 (6T)
		1398750-2 (12T)
		Spare Parts Kit (BMEP)

* One license included with purchase. Individual licenses (P/N 1399255-1) must be purchased for each additional machine.

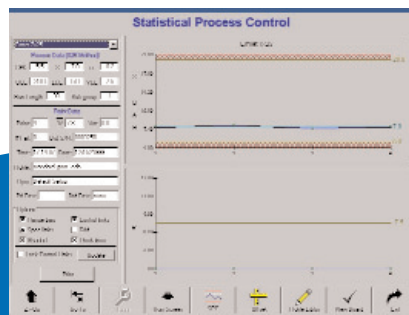
Run Time Press Monitoring

- PCB picture guides operator through pressing sequence
- Graph shows force Vs distance for each connector (can be color printed)
- SPC graphs can be viewed
- Performance statistics such as PCB per hour can be viewed



Statistical Process Control

- Real-time X-bar and R-charts
- Separate graph for each connector type on PCB
- Population data, including CPK, plus individual PCB data shown at left
- Graphs can be printed on optional color printer



www.automation.tycoelectronics.com

Tyco Electronics Corporation, Willow Grove, PA 19090; Phone: 215-657-6202; Fax: 215-657-6356
 Tyco Electronics Corporation, Europe, Dinkelsbuehl, England; Phone: +49 9851 903 800; Fax: +49 9851 903 809

a vital part of your world

© 2006 Tyco Electronics Corp. TYCO is a trademark.
 Keycode 1309328 / GATD

tyco
 Electronics